



General presentation

Products & Manufacturing

Service & Support

Facilities





History and background:

Our Company was created in 2008 by dynamic young people, we are a flexible & adaptable Company.

What set us apart from others it is our capacity to adapt at customer needs and requirements.

During the last years we invest in new resoruces to achieve new objectives.

Business focuses:

- Ship repair & maintenance (Steel, piping, welding, mechanical, etc)
- Technical assitance´s and Inspections / Vessel emergency support
- Marine Propulsion and new constructions
- Offshore welding equipments
- Ship spare parts manufacturing (Bridge, Deck, Machinery)
- Project management
- Automotive Industry maintenance
- Steel structure manufacturing for industry
- Hydro & Industrial repairs
- Special weldings
- Reverse engineering



Location



Vigo



**Polígono a Pasaxe Km.8 nave 24,
36316 Gondomar - Spain**

GPS: 42.156948; -8718974

+34 986461055

vascogall@vascogall.com

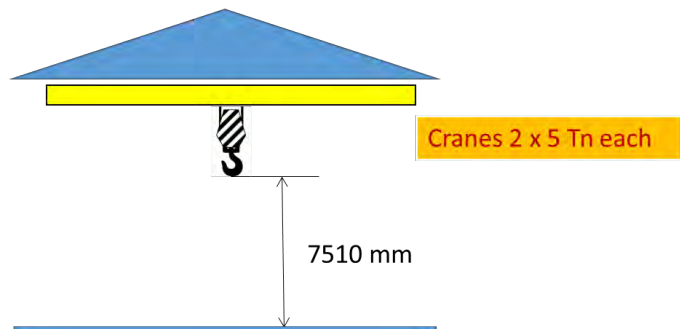
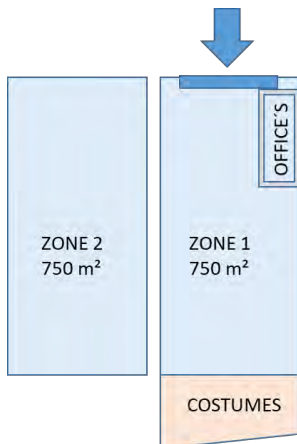
Workshop & Capabilities

Plant Surface: 1.500 m² in total

Each building has Length 49,5 mt x 14,8 mt

Height between the ground and crane hook = 7.510 mm

Good Access to Vigo Harbour



We are able to offer our clients 24/7 support, globally, in the fields of technical support and field service from a single source.





Workshop



Welding machines:

141 TIG / 131-135 MIG-MAG / 111 SMAW / 121 SAW / 136 FCAW

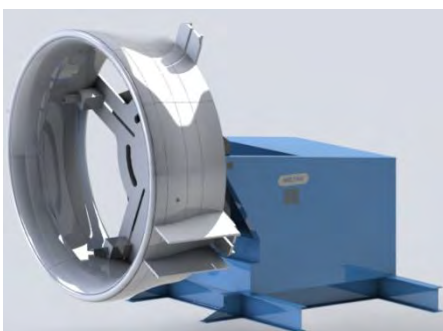
Plasma machines:

Lincoln Tomahawk

Rolling and Bending presses machines

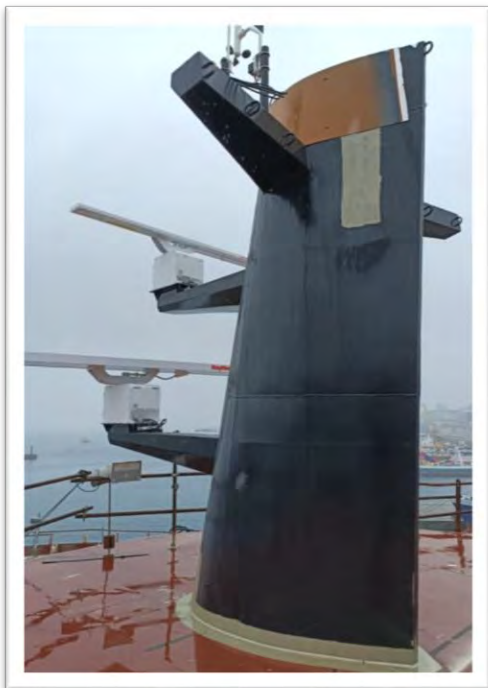
Lathe machine and drilling - threading system

Cutting shearing & band



Antenna mast

Antennas mast for Evrima cruise vessel / HJB C-1705
Customer: HJB Shipyard / The Ritz Carlton.





Carbon Steel DH-36 bulb block manufacturing / bending, assembly and welding



Gangways designed for offshore vessels



Bulwarks for fishing vessels



Technical Assistance

SERVICES & MARITIME EXPERTISE

maritime support and expertise including:

Technical inspections onboard to define repair and welding procedures

Mediation with class to attend all the requisitions and rules compliment.

Report and suggestions to avoid incident it doesn't happen again

NDT coordination with independent third party.

Subcontract personnel or use our people depending on where this happen and facilities

Maintenance and Quality Assurance systems for vessels.

Analysis and repair procedures for cracks, galvanic attack, corrosion etc.

Technical assistance with paint and surface treatments, paint schemes.

Technical resources outsourcing

Qualified technical resources for different projects on short term or long terms

- Supervisors / Foreman
- Welders SMAW-TIG-MIG-FCAW
- Fabrication – Fitters
- Designer, drawings
- Mechanical helpers
- Welding Inspector
- Material: carbon steel / stainless steel / Duplex 2205 / Aluminium
- Gangways
- Watertight doors standard



Industry & Automotive maintenance:

Improvements and solutions for industrial and auxiliar automotive companies, specialized in summer stop maintenance.

Structural modifications, rails transportation, Paint cabins and robot foundations.

Press machines repair with special welding procedures and special repair sequence.

Satairs,platforms, handrails and shelves manufacturing or tranforming and mounting.

Technical Studies to improve easy and effective solutions for common problems

Machines movements

We can move our teams where it is required in a faster way.

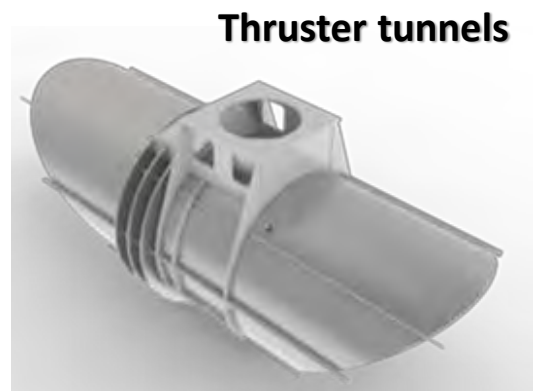
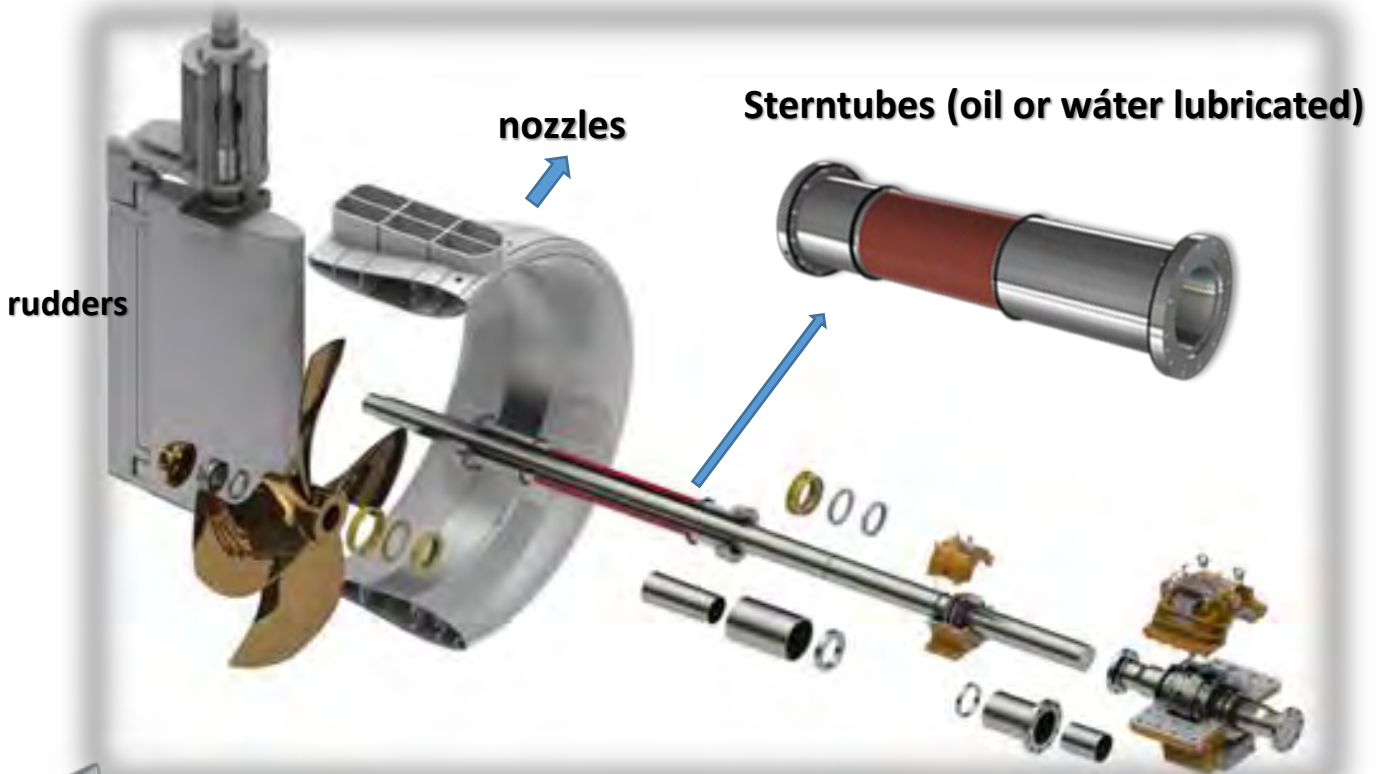
Experts in: Welders, Fitters, Mechanical

Material and equipment logistics.





What can we offer?



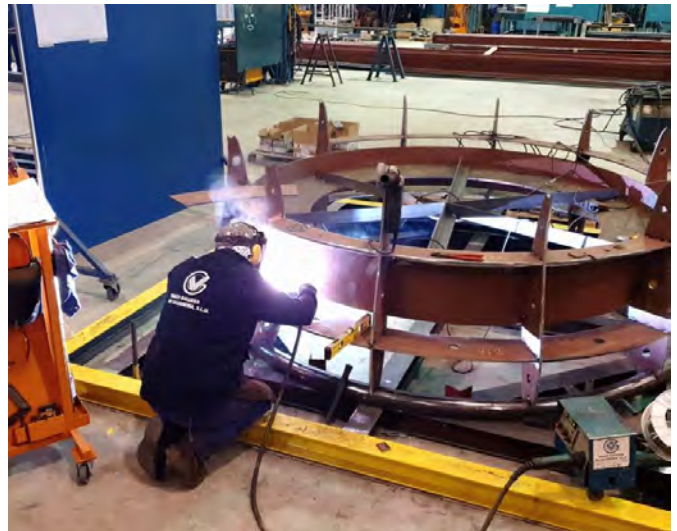
Possible shape profiles to produce: HR- 19.A –TYPE 37 -WTN

Vascogall becomes into the nozzles market during 2020 obtained proper certifications, we produce different types of Nozzles with Profile HR, HP, 19 A , CPP ,WTN, 37 SYM, etc

Regarding the inner shape there are different possibilities 100%,66% or 33% in Duplex (2204) or Stainless Steel Aisi 316L.

During the last years the Duplex manufacturing was implemented because give the chance to reduce the thickness in 20% vs St Steel and it is cheaper than stainless steel.

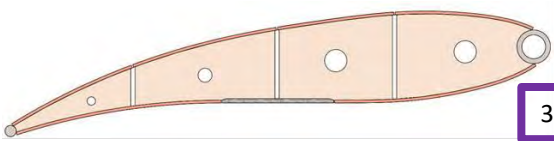
Options for different sizes, from small diameters 600 mm to bigger diameters as 5000 mm or more.



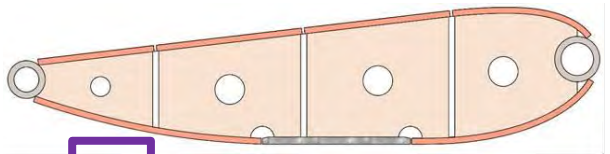
nozzles



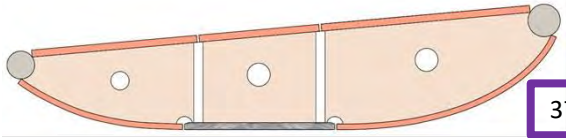
**DIFFERENT OPTIONS FOR
SHAPE PROFILES:**



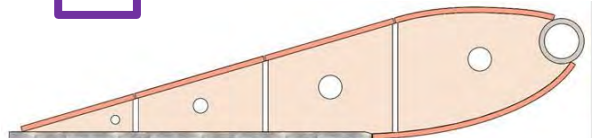
33



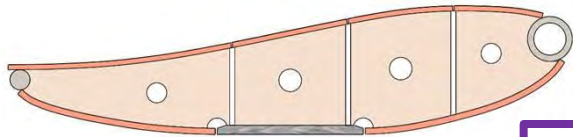
HP



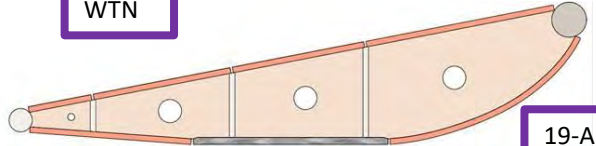
37



WTN



HR

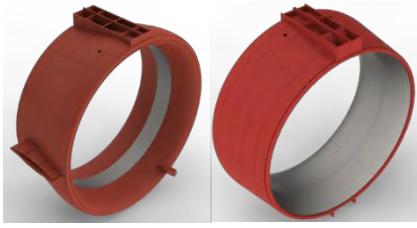


19-A



nozzles

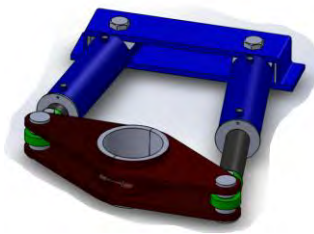
- 100% Carbon Steel.
- 33-66-100% Aisi 316 or Duplex 1.4462



Approval drawings with class registers
3.2 certification for manufacturing and materials
Welding procedures and welder's certifications with class registers.



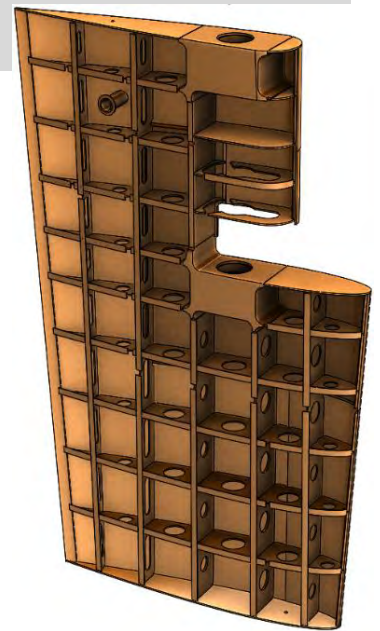
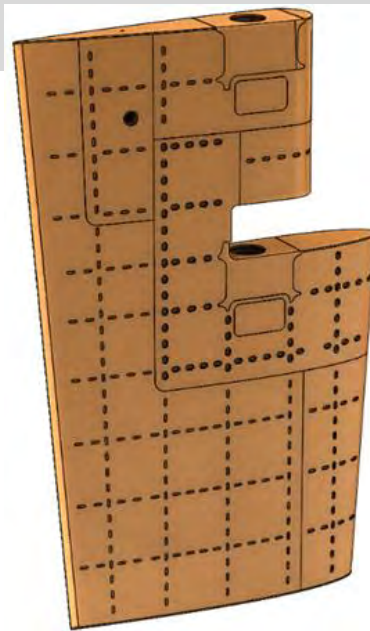
rudders



During the last years we be introduced into the rudders market with good results, into our scope of experience we have the folowing type of rudders:

1. Spade or balanced rudder
2. Unbalanced rudders
3. Semi balanced rudders
4. Flap rudders
5. Pleuger rudders

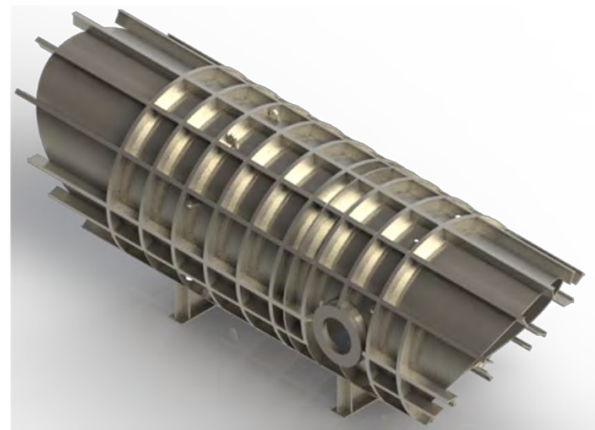
Vessel: Sider Colombia
Class: 3.2 Bureau Veritas



Our experience in tunnel thrusters give us the possibilities to produce different type of tunnels for different customers.

Models for CP or FP propellers.

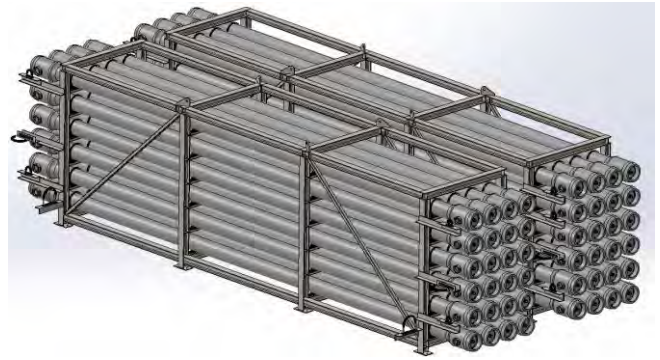
The tunnels can be delivered with the final paint scheme and thruster – propeller blades installed inside. This means hours savings in the shipyard and shortest vessel period into the dry dock.



Super Duplex & St.St.



Superduplex 2507 welding .
Pipe lines UNS S 32750



TIG welding process certified for stainless Steel and duplex

POWER BLOCK PULL PB78



Spare parts



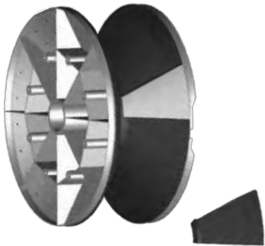
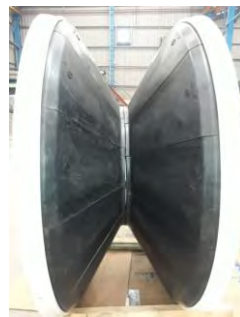
For Tuna vessels: We have designed and patented a model of power block pull with excellent reliability and durability results. PEVASA fleet have been using them since last four years.

Manufactured in carbón Steel or stainless Steel and high strength rubber

Lead time standard 8 weeks.

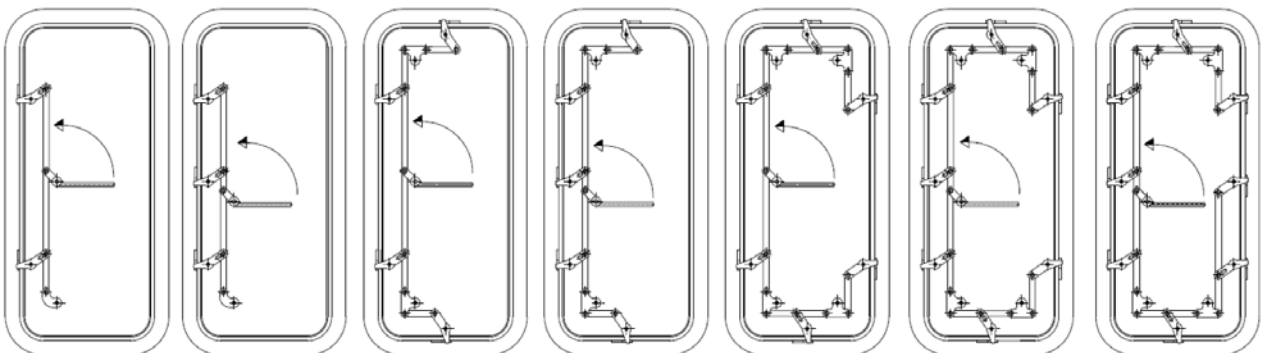
Benefits:

- Longer durability above standard
- No damages over the fishing net
- Better thrust and grip
- No necessary spare parts
- Easy to install onboard by crew
- Can be rotated sideways



Oficina Española de Patentes y Marcas

WATERTIGHT DOORS:



- Carbon Steel
- Stainless Steel
- Aluminium



CLEARANCE (LIGHT DIMENSION)

HEIGHT (mm)	1350	1400	1500	1600	1650	1700	1750	1800	1850
WIDTH (mm)	600	600	600	600	600	600	600	600	600
	650	650	650	650	650	650	650	650	650
	700	700	700	700	700	700	700	700	700
						800	800	800	800
								850	850



Tanks:

Spare parts



Gangways:

Spare parts



Manufactured in aluminium 6060-T6 to facilitate a safe link between the ship and the shore.

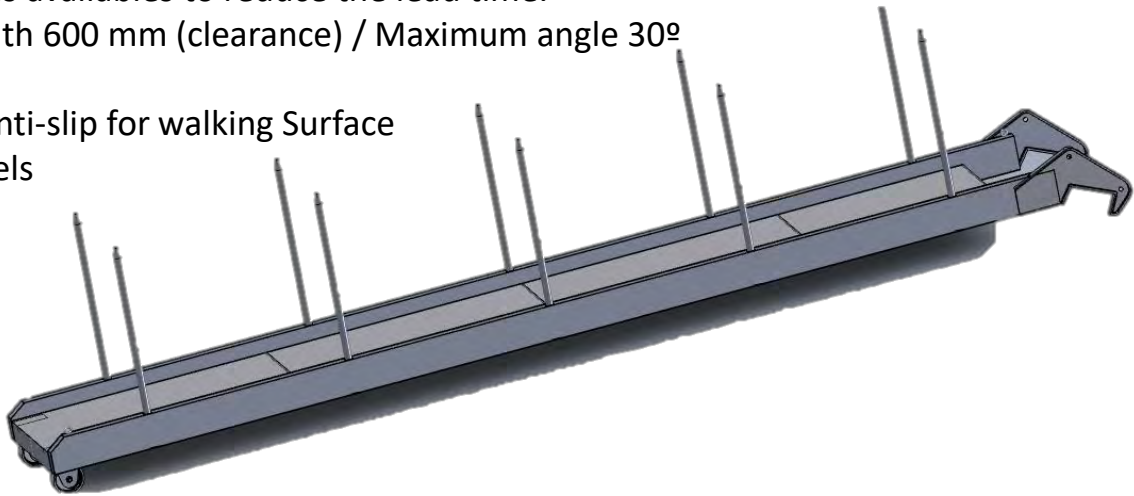
Standard sizes available to reduce the lead time.

Standard width 600 mm (clearance) / Maximum angle 30°

Nylon ropes

Aluminium anti-slip for walking Surface

2 Nylon wheels



Length (mt)	Loading capacity	Weight (kg)
	4 kN/m ²	
4	960 kg	85
5	1200 kg	98
6	1440 kg	114
7	1680 kg	175
8	1920 kg	220
9	2160 kg	285
10	2400 kg	318
11	2640 kg	345
12	2880 kg	405



Cable support:

Spare parts



Grade materials:

We are focused over special weldings for dissimilar materials, for example Duplex vs Carbon steel, etc.

S275 JR

S355 J2G3 / S355J2+N

NVA- NVB- DH36 – EH36

A516 Gr.70

A387 Gr.11 CL-2

Aisi 304

Aisi 310

Aisi 316L

Aisi 420

Duplex 2204 & 2205

Etc.



Our production process it is submitted to internal quality controls adapted over the different kind of equipment's.

Our technical office design the specific PPI for each product.

NDT test subcontracted with external laboratory with all the certifications, Level 2 or 3

Welding procedures and welder´s qualifications certified by class registers IACS.

Welding materials always with type approval acc ISO.

Dimensional controls done by our quality engineer or 3D Laser tracker if needed (subcontracted).

PQAP – FMEA available to comply.



Reverse engineering:

Our partner with 3D articulated arm and laser tracker CMM's it is able to attend 7/24 our requisitions.

After obtain the technical information we can record complex dimensions that cannot be measured by conventional means.

Then our engineer's create the 3D drawing to manufacture or repair

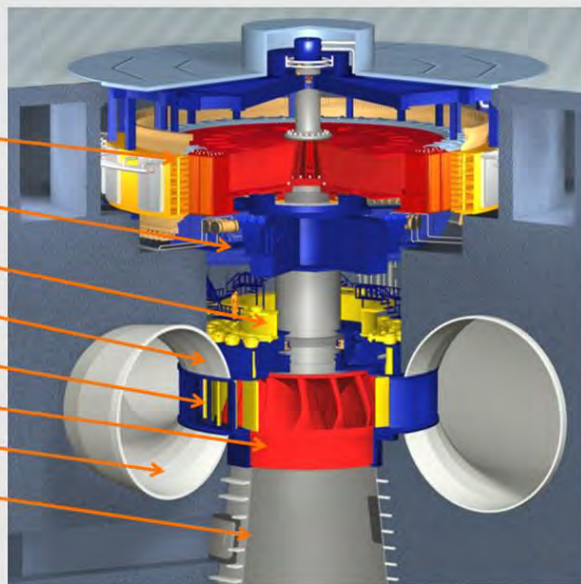


Hydro:

We are able to attend repairs, maintenance or manufacturing different parts for hydro industry.

Typical Vertical Turbine Generator Arrangement

- Generator
- Thrust bridge
- Main Shaft
- Distributor
 - Stay vanes
 - Wicket gates
- Runner
- Spiral case
- Draft tube





**VASCO GALLEGA
DE CALDERERÍA, S.L.U.**

Contact us.

Fabian Misa Gomez -General manager
vascogall@vascogall.com

Jorge Vellano Colman –Operations & Quality
operations@vascogall.com
+34 617361502